

RENEWAL

& us

INTUITION

Leadership

IN 2025

the Year of the

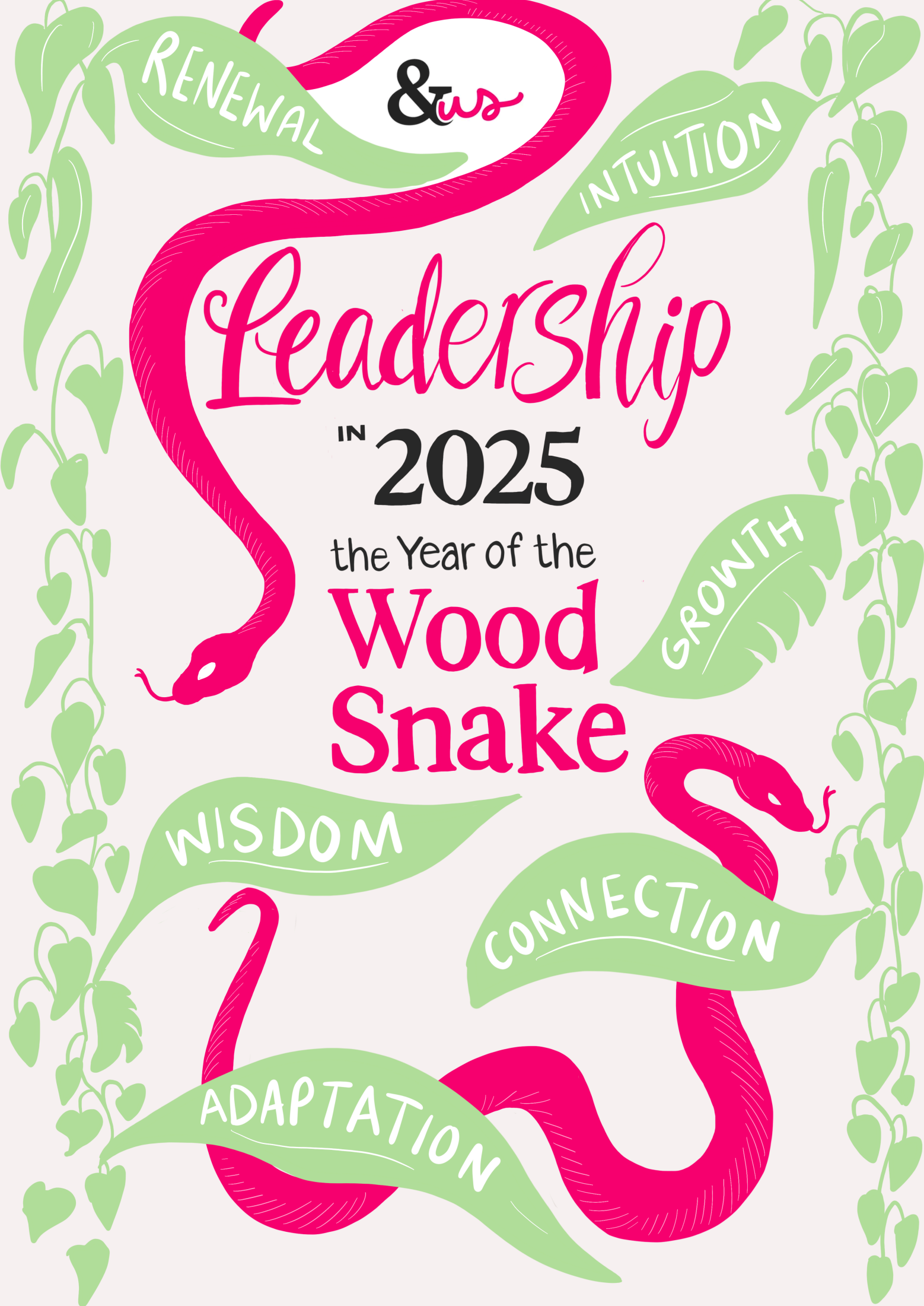
Wood Snake

GROWTH

WISDOM

CONNECTION

ADAPTATION



BUILDING STRONG RELATIONSHIPS

FACILITATE NEW and DEEPER BONDS WITH EACH OTHER

DESIGN FOR INTENTIONAL CONNECTION

FIND TIME TO BE WITH OTHERS

STORYTELLING CREATES CONNECTION

ADAPTABILITY and FLEXIBILITY

PRODUCTIVITY IS MORE NUANCED THAN JUST OUTPUT

HOLDING MULTIPLE POSSIBLE FUTURES IN YOUR MIND

INVITE PEOPLE TO DESIGN THE SOLUTION WITH YOU

OPTIMISM is A SUPER POWER!!

LEADERS ARE CULTURE ARCHITECTS

REMAIN GRACEFUL UNDER PRESSURE

FOR SEAMLESS PROGRESS

REGULATE YOUR EMOTIONS TO MANAGE YOUR ENERGY

REFOCUS FROM "I WANT"

TO "WE NEED"

BEING IN STEALTH MODE



PATIENCE and STRATEGY OVER IMPULSIVITY

REDISCOVER THE POWER OF ...

A.I. UNCERTAINTY GEOPOLITICS ECONOMY



CONSIDER THE RIPPLE EFFECTS OF LONG TERM IMPACT

SYSTEMS THINKING IS AN URGENT NEED

LEADERSHIP IN 2025 IS AN OVERWHELMING PROSPECT

SEE HOW PATTERNS UNFOLD



PLAY THE LONG GAME RATHER THAN CHASE QUICK WINS

... PATIENCE

SIT IN THE MOMENT

BE THE CALM AMIDST THE CHAOS

MAKE PAUSING TO REFLECT AN ACTIVE HABIT

RECONNECT TO GUT INSTINCT

STAY OPEN

INTUITION IS A RICH SOURCE OF DATA



WISDOM THROUGH REFLECTION